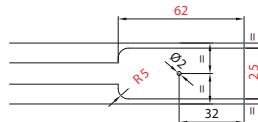
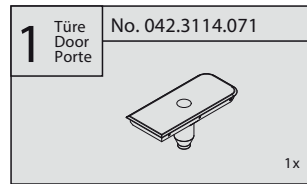
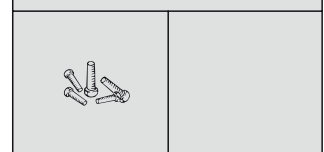
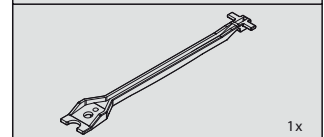
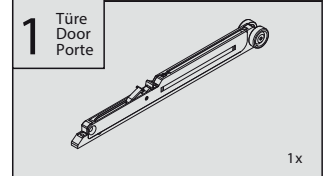


Garnituren / Sets/zestawy



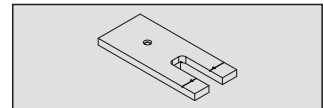
10 – 60kg No. 042.3102.072
61–100kg No. 042.3102.071



Dämpfen in Schliessrichtung Soft closing function in closing direction Funkcja miękkiego zamykania w kierunku zamykania →	▲ 10–60kg 042.3102.072 ▲ 61–100kg 042.3102.071	1 x bestellen Order 1 x Commander 1 x
Dämpfen in Schliess- und Öffnungsrichtung Soft closing function in opening and closing direction Funkcja miękkiego domykania w kierunku otwierania i zamykania ↔	▲ 10–60kg 042.3102.072 ▲ 61–100kg 042.3102.071	2 x bestellen Order 2 x Commander 2 x

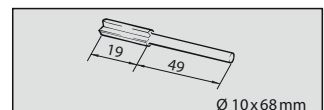
Zubehör / Accessories/Aksesoria
Fräslehre für Montageöffnung
Routing jig for assembly opening
Szablon do wyznaczania otworu

Art. No.
042.3118.071

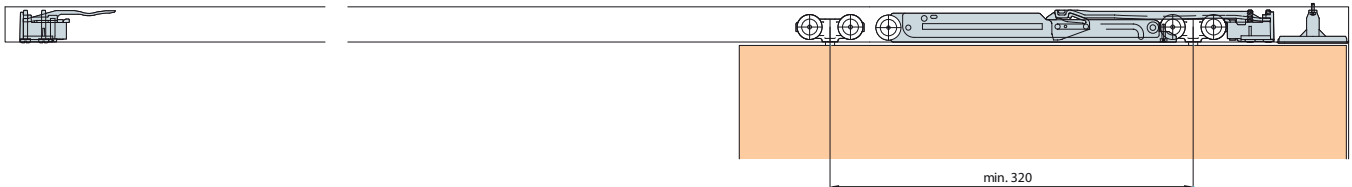


Nutfräser HM (Hartmetall)
Groove cutter HM (hard metal)
Frez do wpustów metalowych HM

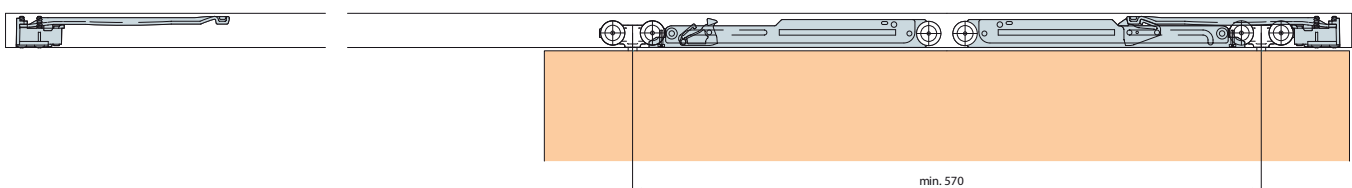
600.0000.309



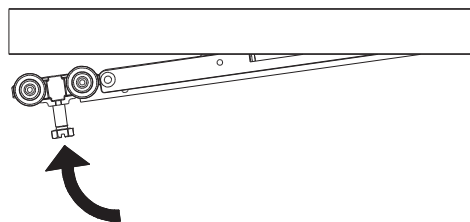
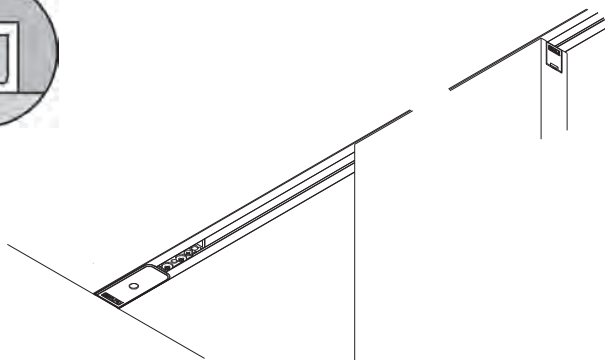
Dämpfen in Schliessrichtung /Soft closing in closing direction/Miękkie domykanie w kierunku zamykania



Dämpfen in Schliess- und Öffnungsrichtung /Soft closing in closing and opening direction/
Miękkie domykanie w kierunku zamykania i otwierania



Dämpfeinzug | Soft close | Amortyzacja



Die Montageöffnung stellt sicher, dass die Lauftechnik und Einzugsdämpfung nachträglich eingebaut werden können, ohne dass die Laufschiene demontiert werden muss.

The assembly opening ensures that the running system and the soft and self closing system can be retrofitted without removing the running track.

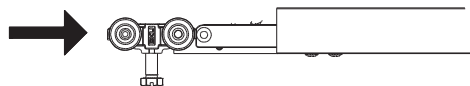
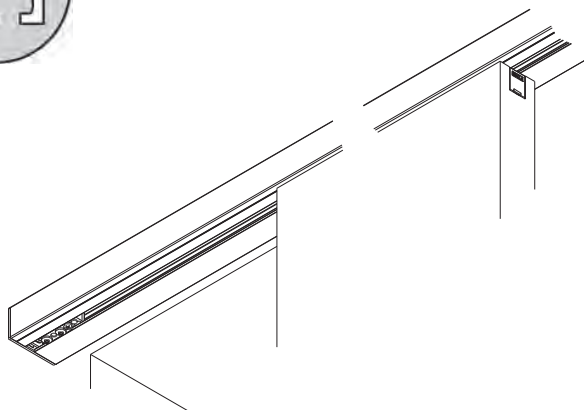
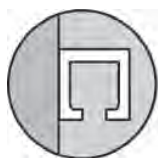
Otwór montażowy umożliwia doposażenie systemu jezdniowego oraz prowadnicy w systemie miękkiego i samodomykającego w szynę jezdniową.



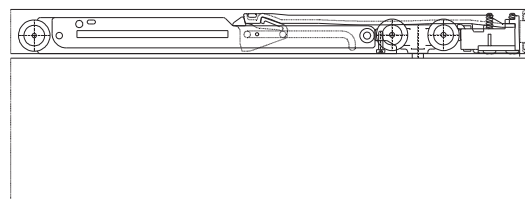
Empfehlung Hawa: Nicht-demontierbare Laufschiene au sfräsen
 Recommendation Hawa: Notch non-dismountable running tracks
 Recommendation Hawa: Encoche rails de roulement non-démontable



B + C 3

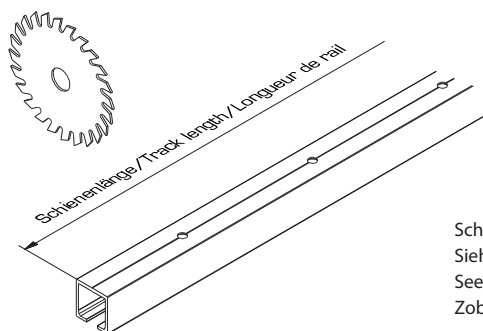
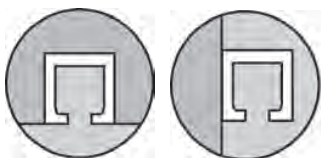


Empfehlung Hawa / Recommendation Hawa / Rekomendacja Hawa



min. 62

A

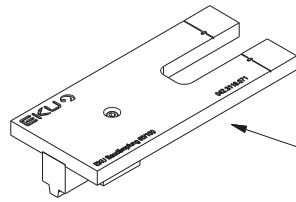


Schienenlänge / Track length / Longueur de rail

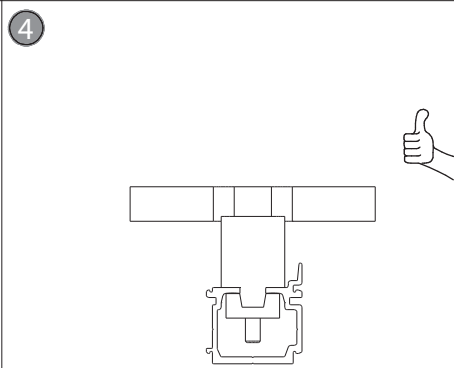
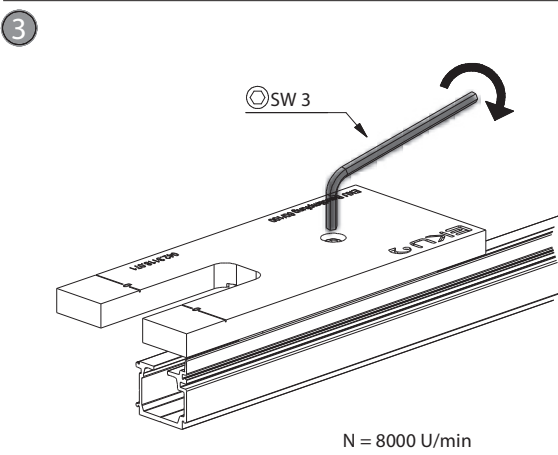
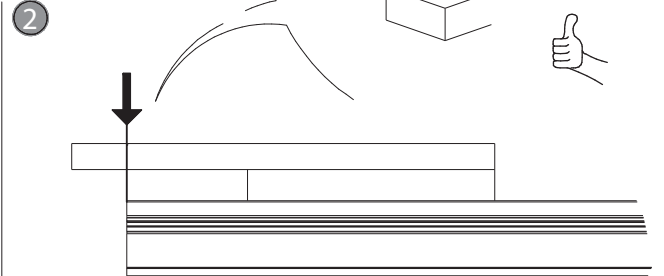
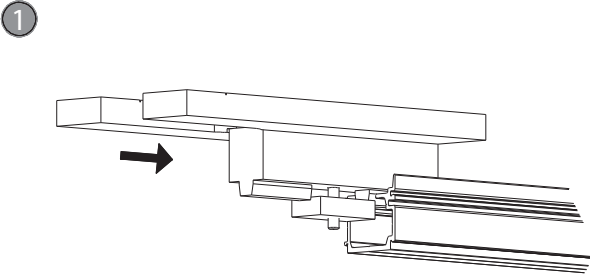


Schienenlänge / Track length / Longueur de rail:
 Siehe Montageanleitung vom Baubeschlag
 See mounting instructions architectural hardware
 Zobacz instrukcję montażu okuć

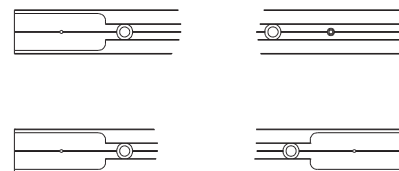
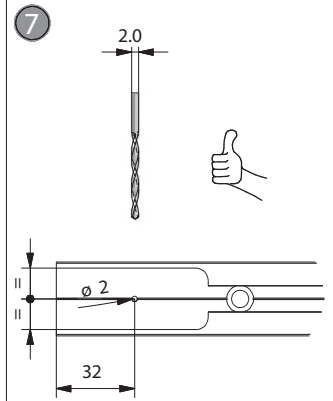
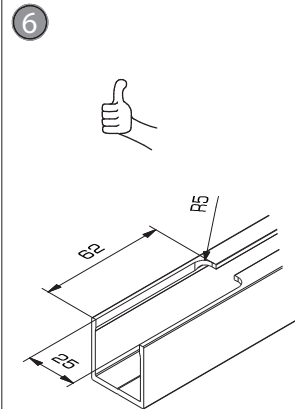
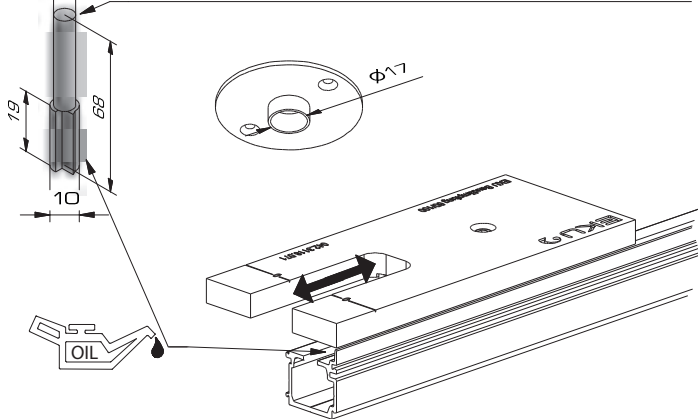
Dämpfeinzug | Soft close | Amortyzacja



Frässhablone
Milling jig
szablon do frezowania
Art.No. 042.3118.071



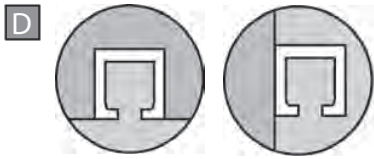
5 Nutfräser HM (Hartmetall), ϕ 10mm, Länge 68mm
Groove cutter HM (hard metal), ϕ 10mm, length 68mm
Frez do wpustów metalowych HM, ϕ 10mm, długość 68mm
Art.No. 600.0000.309



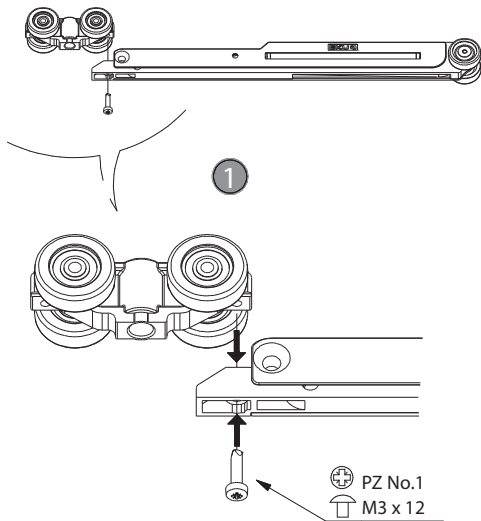
1x Dämpfen in Schliessrichtung
Soft closing function in closing direction
Funkcja łagodnego domykania w kierunku zamykania

2x Dämpfen in Schliess- und Öffnungsrichtung
Soft closing function in opening and closing direction
Funkcja łagodnego domykania w kierunku otwierania i zamykania

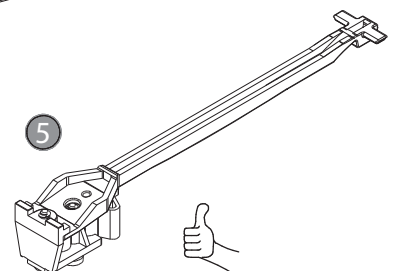
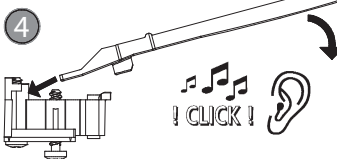
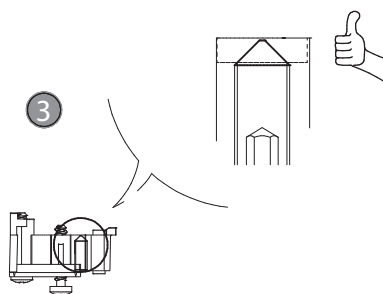
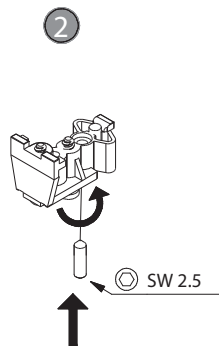
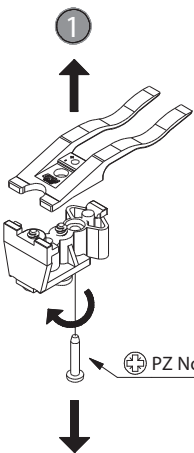
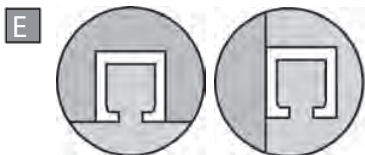
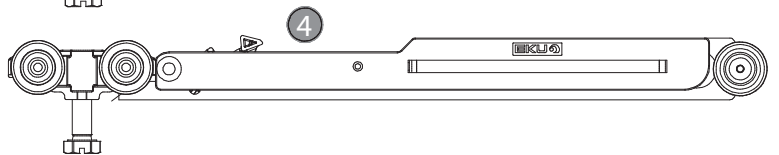
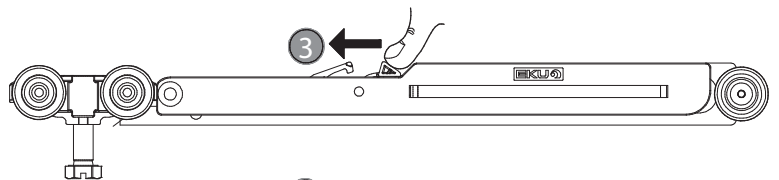
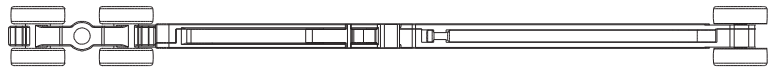
Dämpfeinzug | Soft close | Amortyzacja



Montage Beschlag /Mounting hardware/Elementy montażowe:
Siehe /See/Voir 6

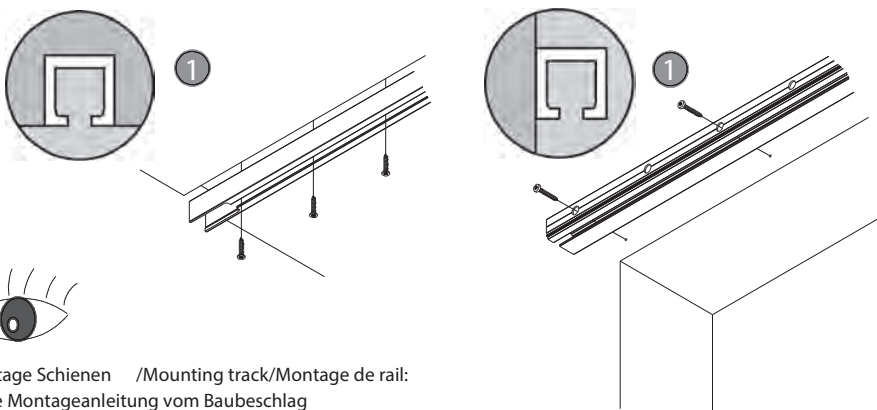


!! 1.5!0.8-1.5N!!



Dämpfeinzug | Soft close | Amortissement

F

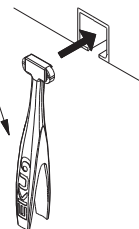


Montage Schienen /Mounting track/Montage de rail:
 Siehe Montageanleitung vom Baubeschlag
 See mounting instructions architectural hardware
 Zobacz instrukcję montażu okuć architektonicznych

2

Schienenreiniger
 Track cleaner
 Środek do czyszczenia torów

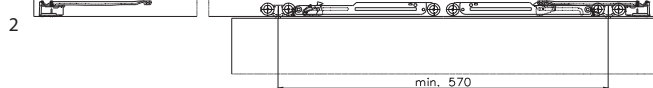
Art.No. 057.3099.071



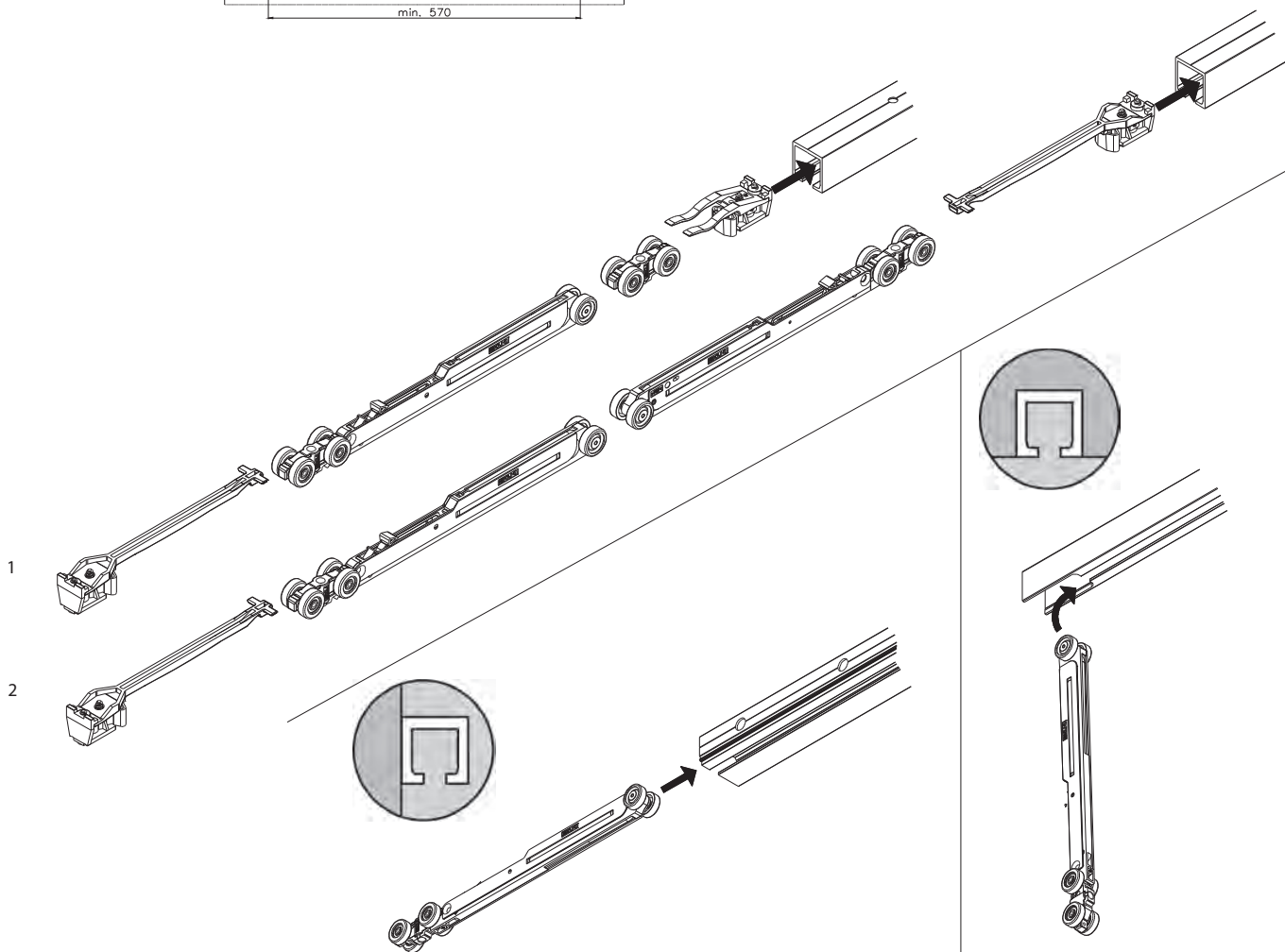
G



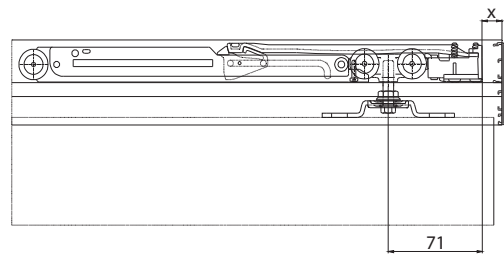
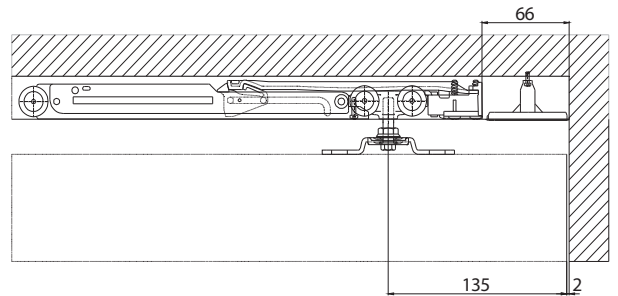
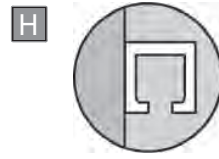
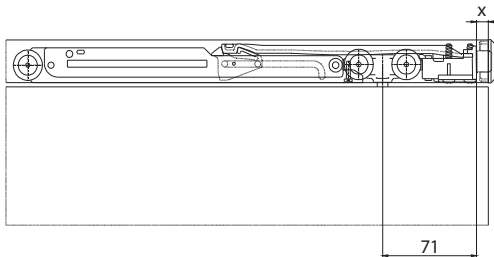
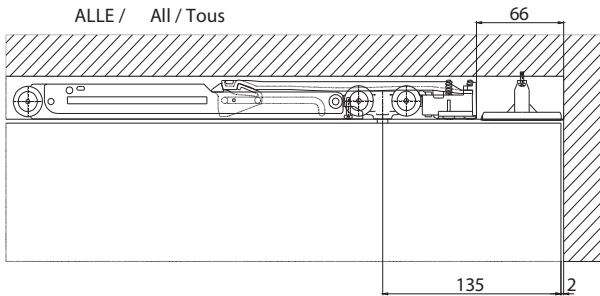
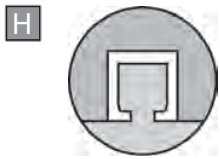
Dämpfen in Schliessrichtung
 Soft closing function in closing direction
 Funkcja miękkiego domykania w kierunku zamykania



Dämpfen in Schliess- und Öffnungsrichtung
 Soft closing function in opening and closing direction
 Funkcja miękkiego domykania w kierunku otwierania i zamykania



Dämpfeinzug | Soft close | Amortyzacja

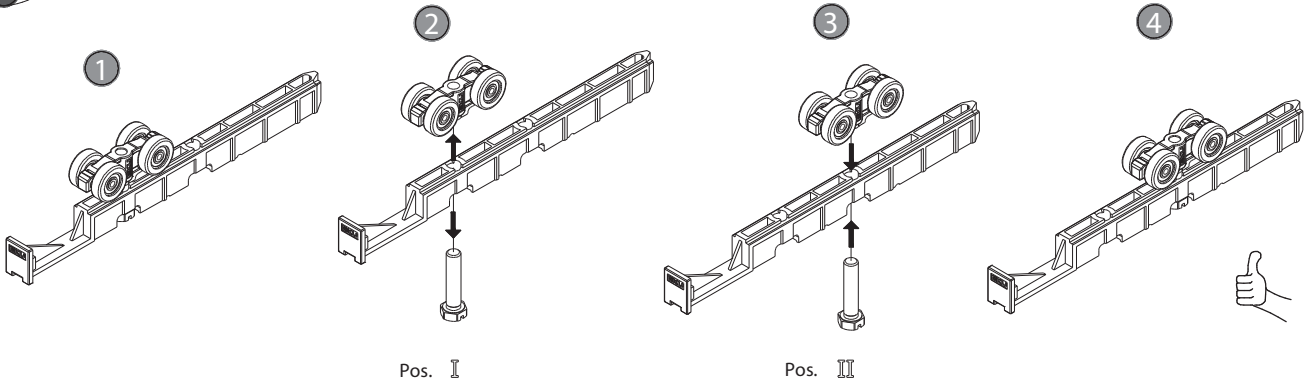


Montage Beschlag / Mounting hardware / Montage de ferrures:
 Siehe Montageanleitung vom Baubeschlag
 See mounting instructions architectural hardware
 Zobacz instrukcję montażu okuć

X = Siehe entsprechende Einbaubeispiele im Katalog
 See corresponding mounting examples in catalogue
 Zobacz odpowiednie przykłady montażu w katalogu



Hawa Porta 60/ 100 HM/ HMD
 Hawa Divido 100 HM/ GRM



Dämpfeinzug | Soft close | Amortyzacja

