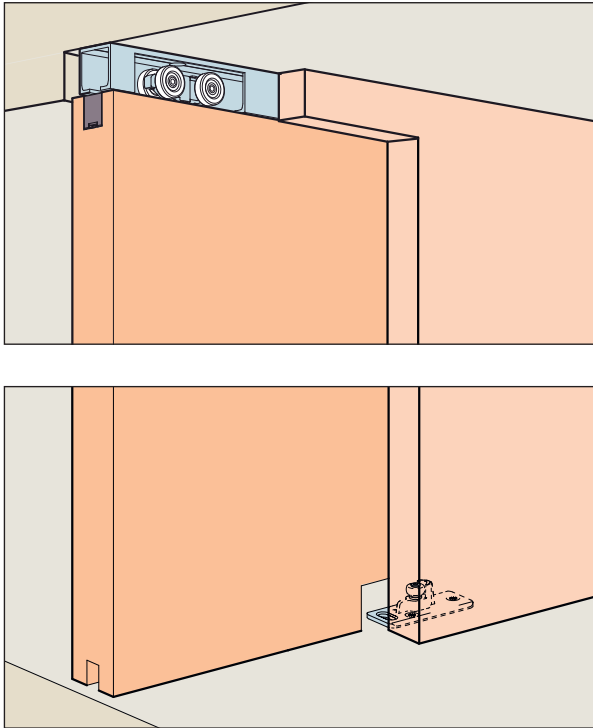
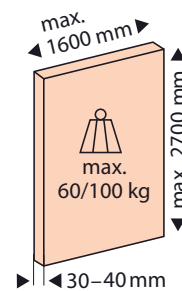
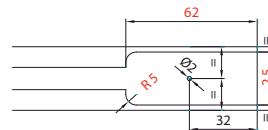
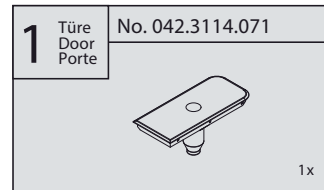


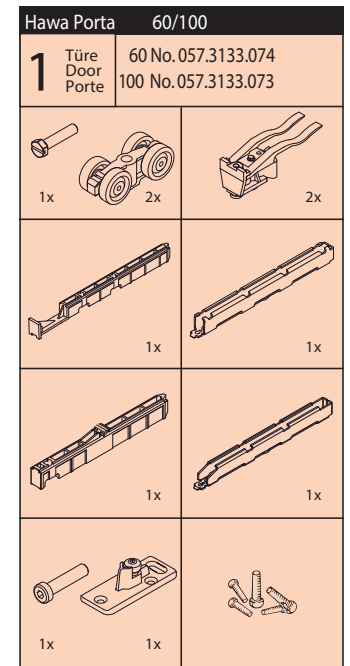
Montageanleitung Mounting instructions Instructions de montage



Garnituren / Sets/zestawy



Garnituren / Sets/zestawy



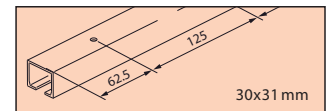
Zubehör / Accessories/akcesoria

Einfachlaufschiene, Alu, gelocht
Running track, aluminium, pre-drilled
Tor, aluminiowa, wstępnie nawiercona

Gr./Size

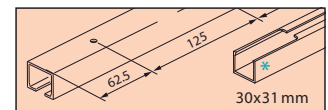
Art. No.

1500 mm 057.3016.150
1700 mm 057.3016.170
2000 mm 057.3016.200
2500 mm 057.3016.250
6000 mm 057.3016.600



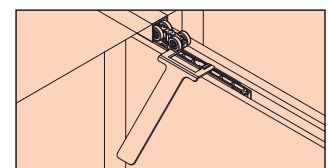
Einfachlaufschiene, Alu eloxiert, gelocht
Running track, aluminium anodized, pre-drilled
Tor z aluminium anodowanego, wstępnie nawiercona

2000 mm 057.3016.201
2500 mm 057.3016.251
2500 mm 057.3016.256 *
6000 mm 057.3016.601



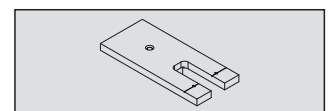
Demontageschlüssel
Klucz do demontażu
Clé de démontage

042.3119.101



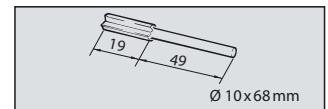
Fräslöhre für Montageöffnung
Szablon do frezowania otworu montażowego
Gabarit de fraisage pour ouverture de montage

042.3118.071



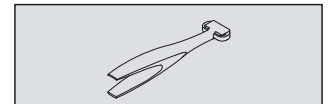
Nutfräser HM (Hartmetall)
Groove cutter HM (hard metal)
Frez do metalu HM

600.0000.309

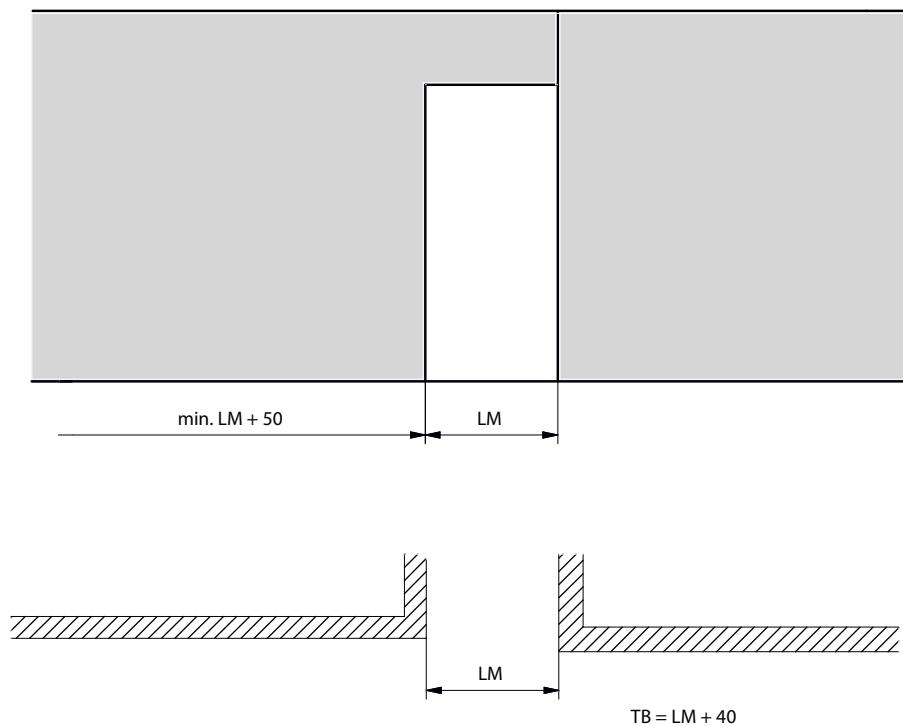


Schienenreinigungsbürste, Kunststoff grau
Brush for track cleaning, plastic grey
Czyścik do toru, plastikowy, szary

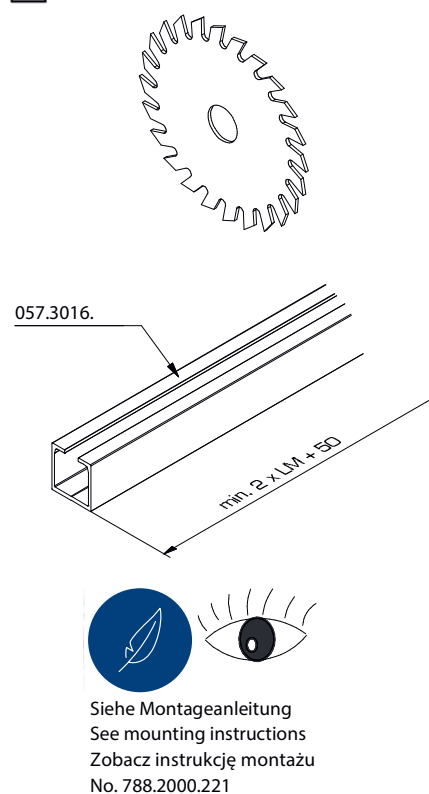
057.3099.071



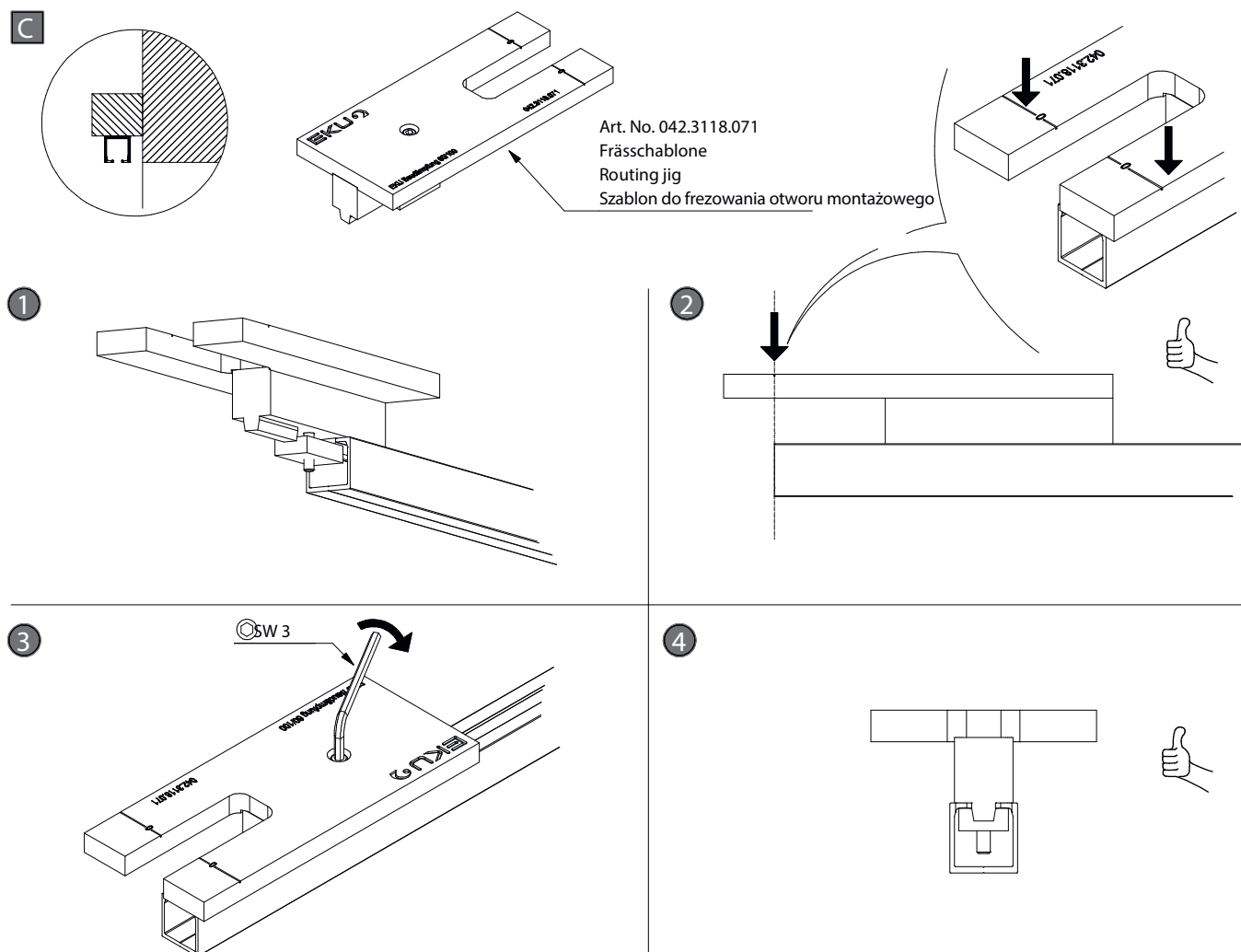
A



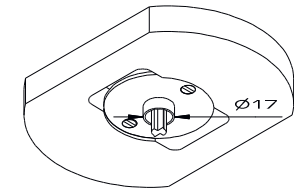
B



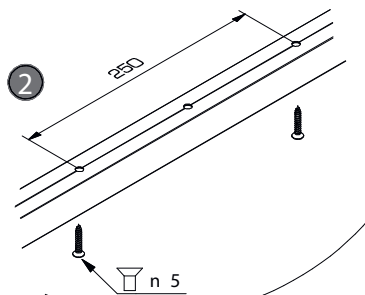
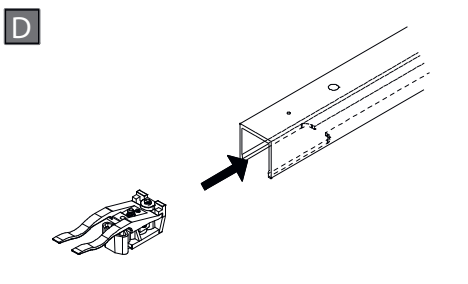
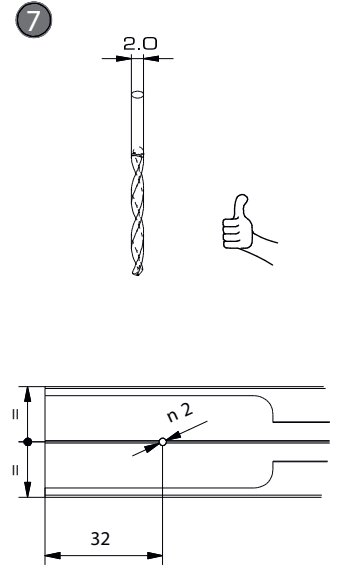
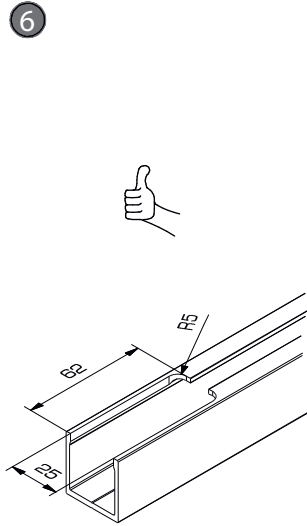
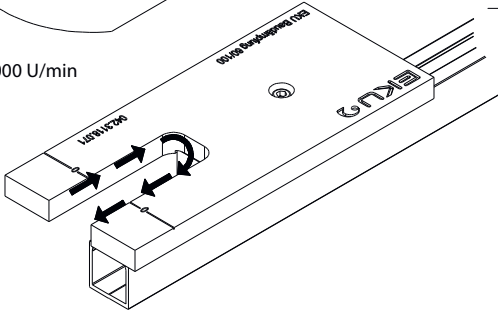
C



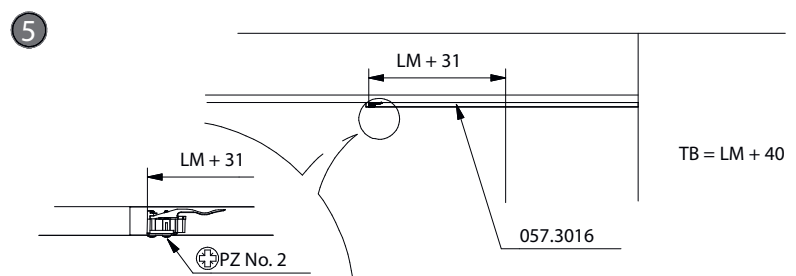
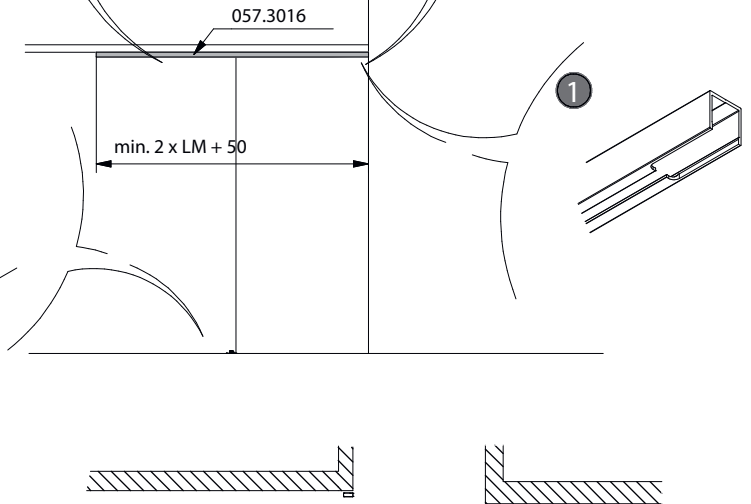
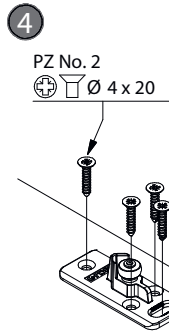
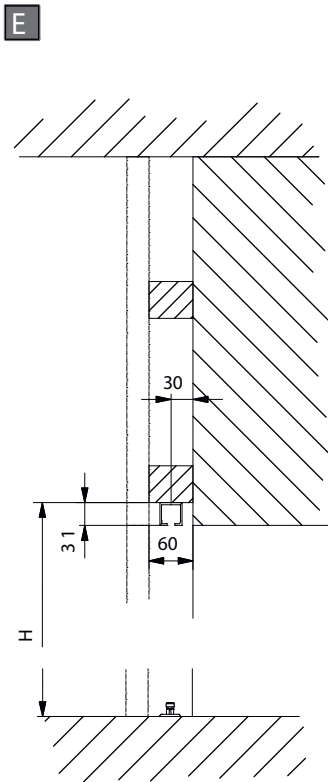
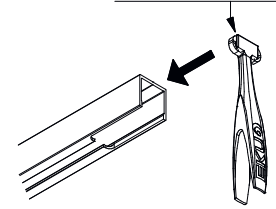
- 5 Art. No. 600.0000.309
 Nutfräser HM (Hartmetall), Ø 10mm, Länge 70mm
 Groove cutter HM (hard metall), Ø 10mm, length 70mm
 Frez do metalu HM Ø 10mm, longueur 70mm

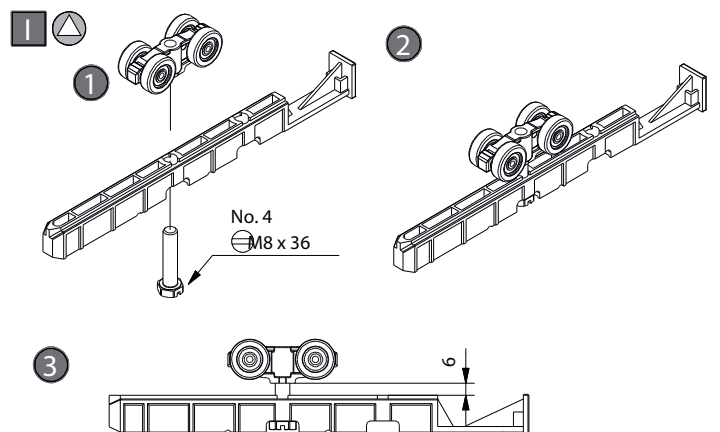
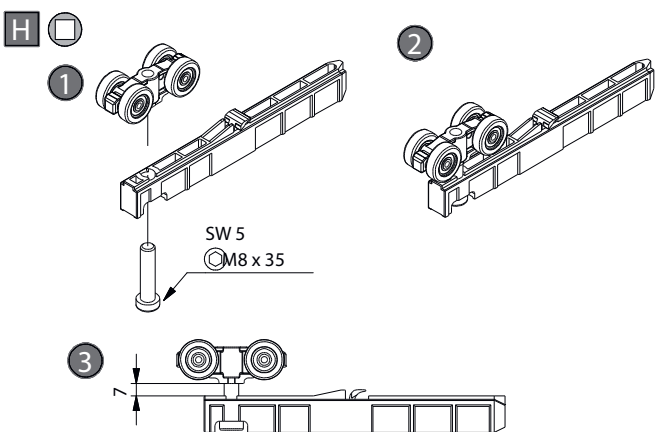
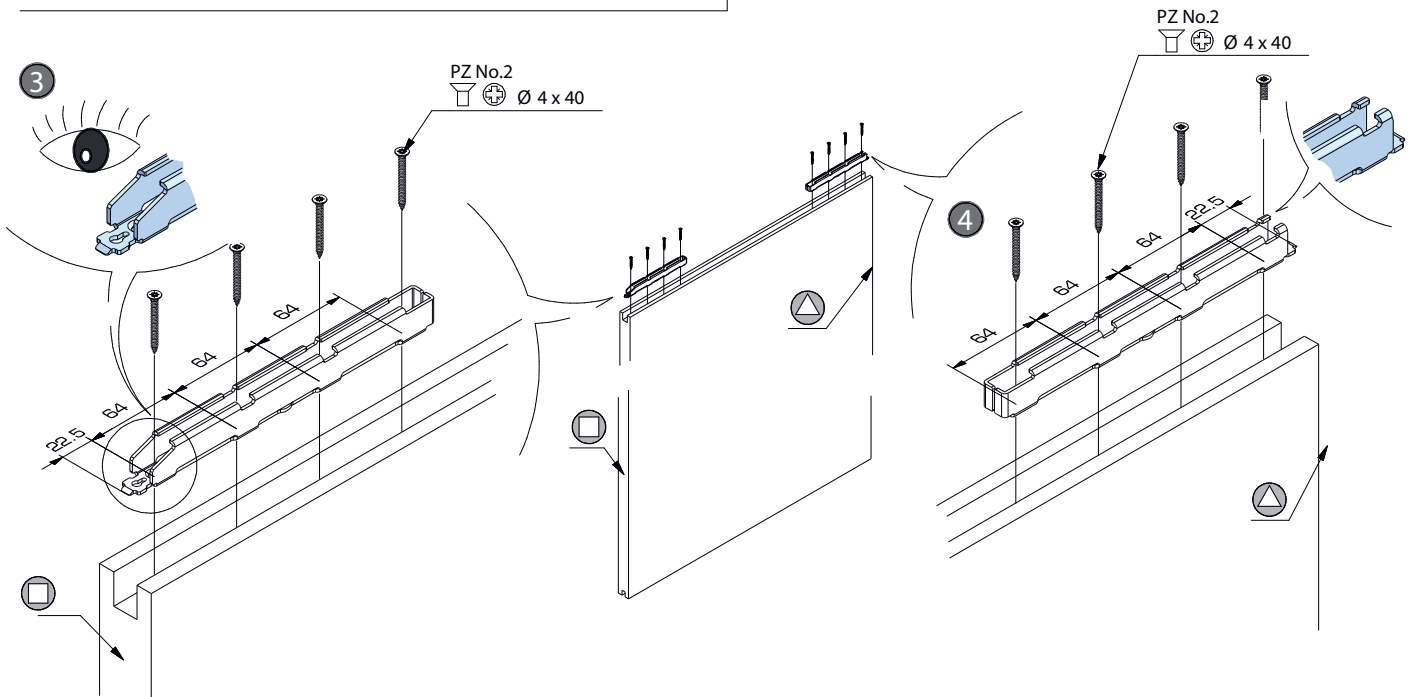
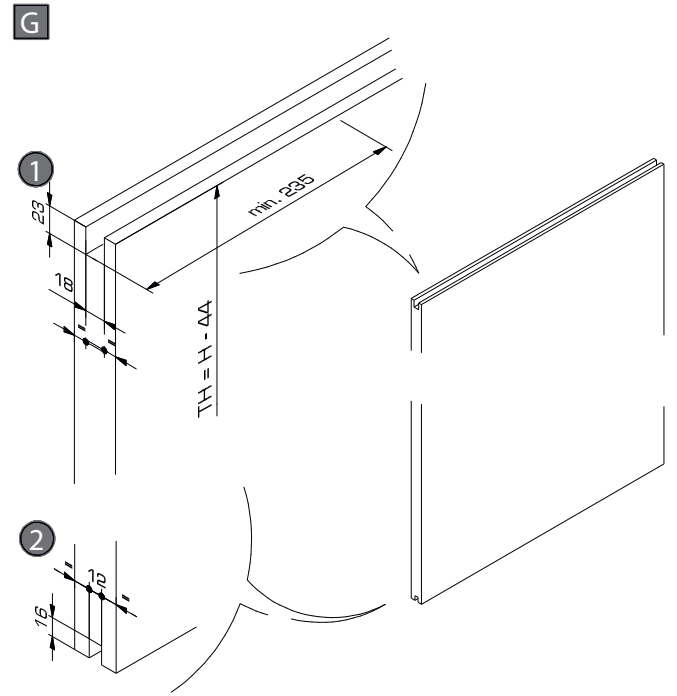
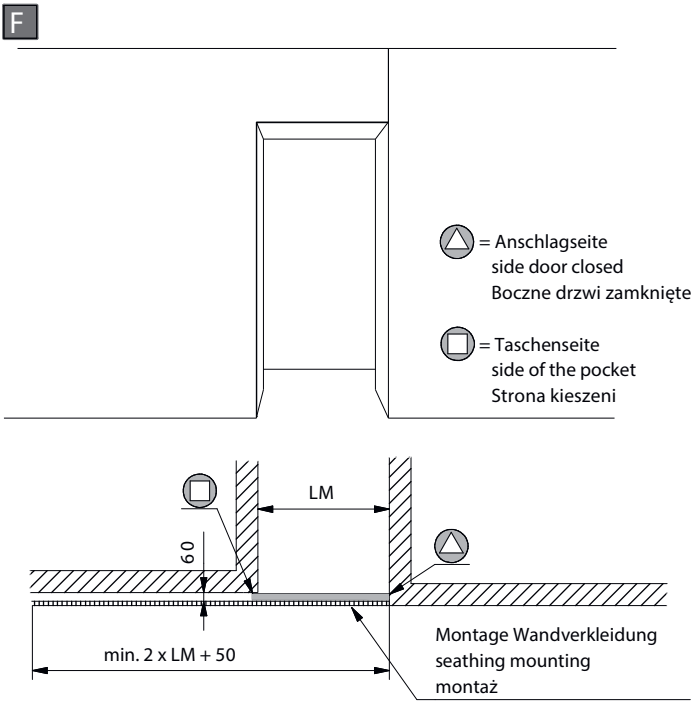


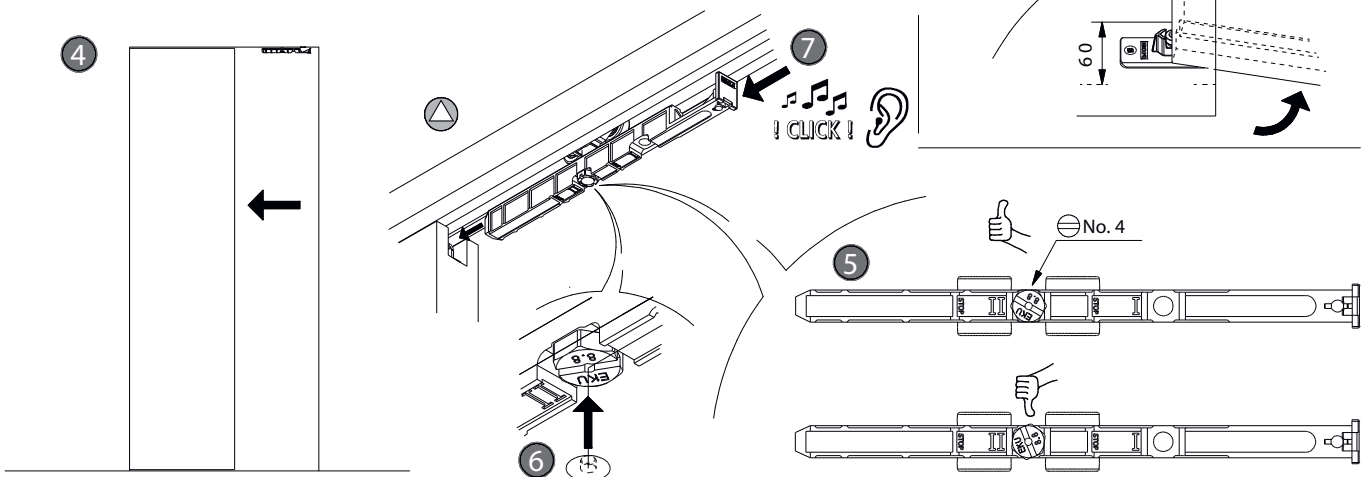
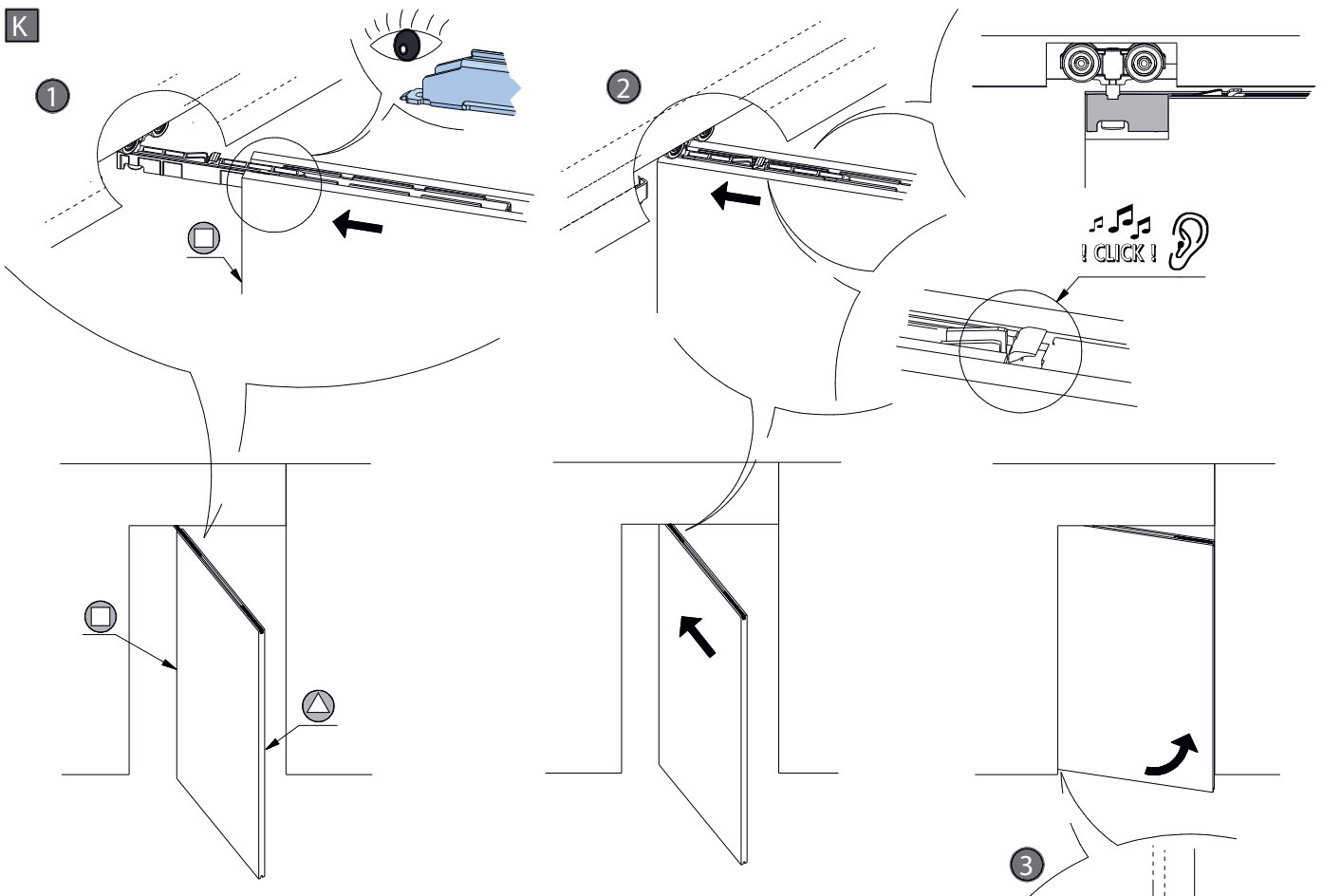
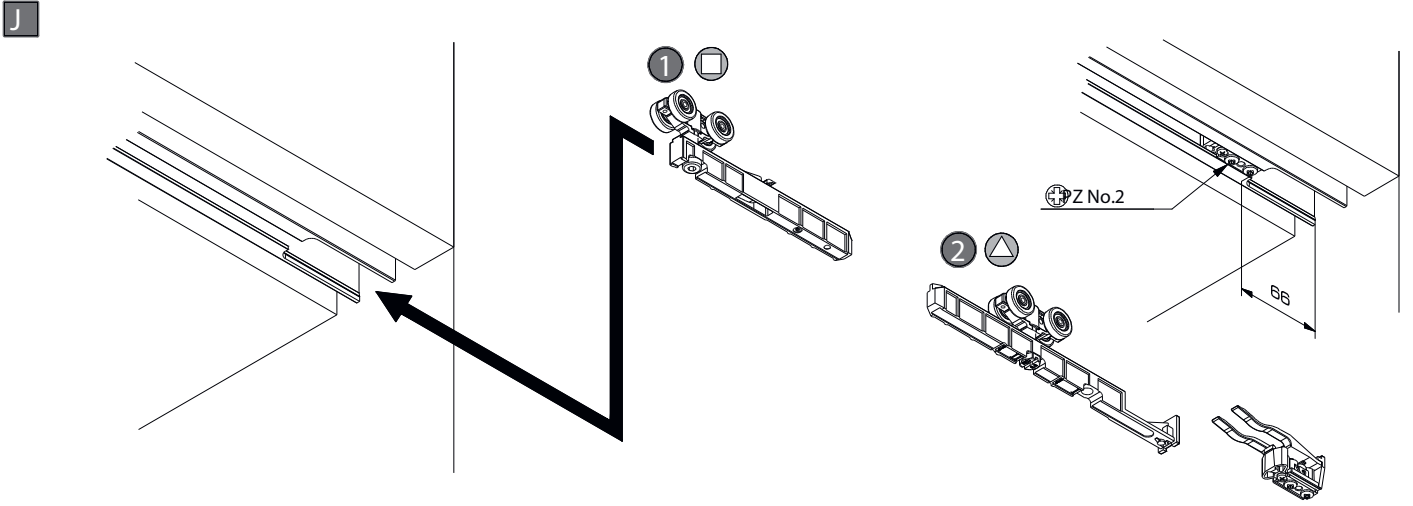
N = 8000 U/min

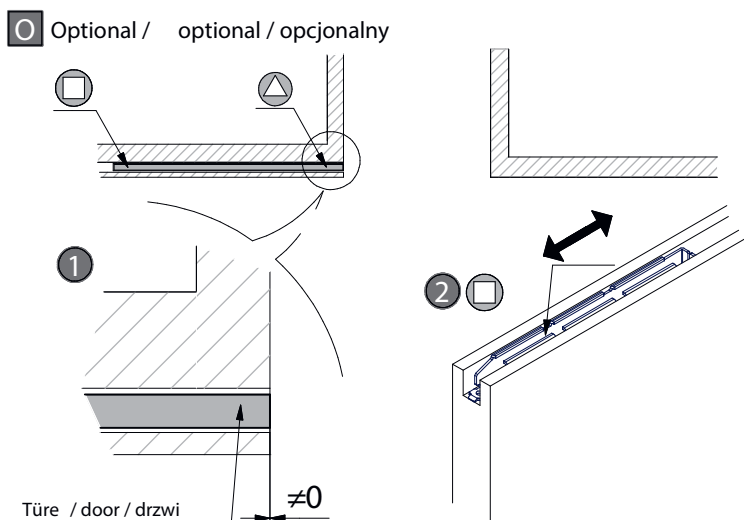
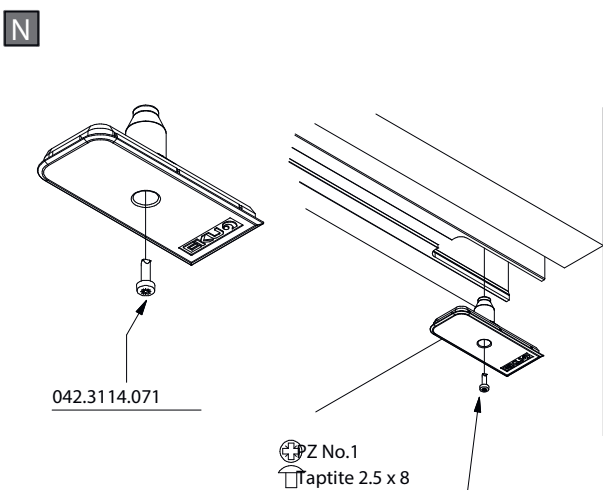
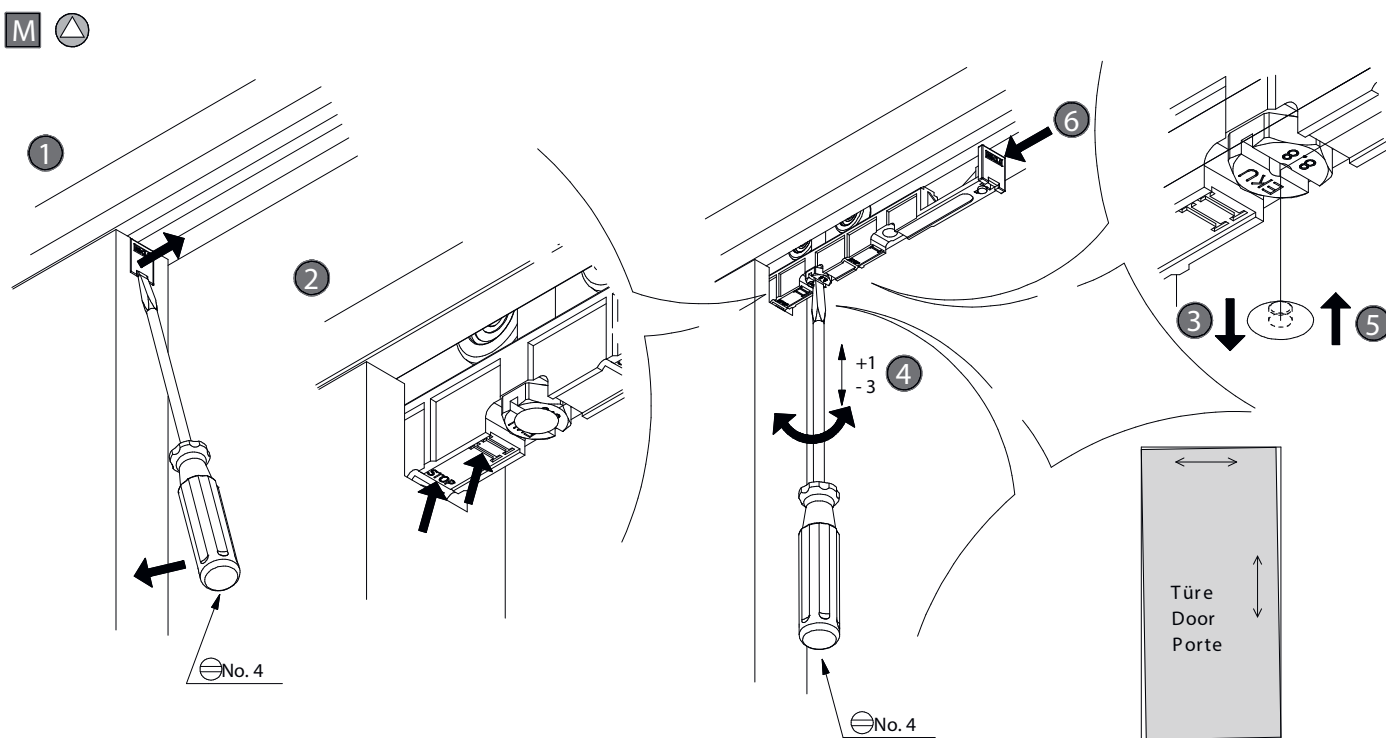
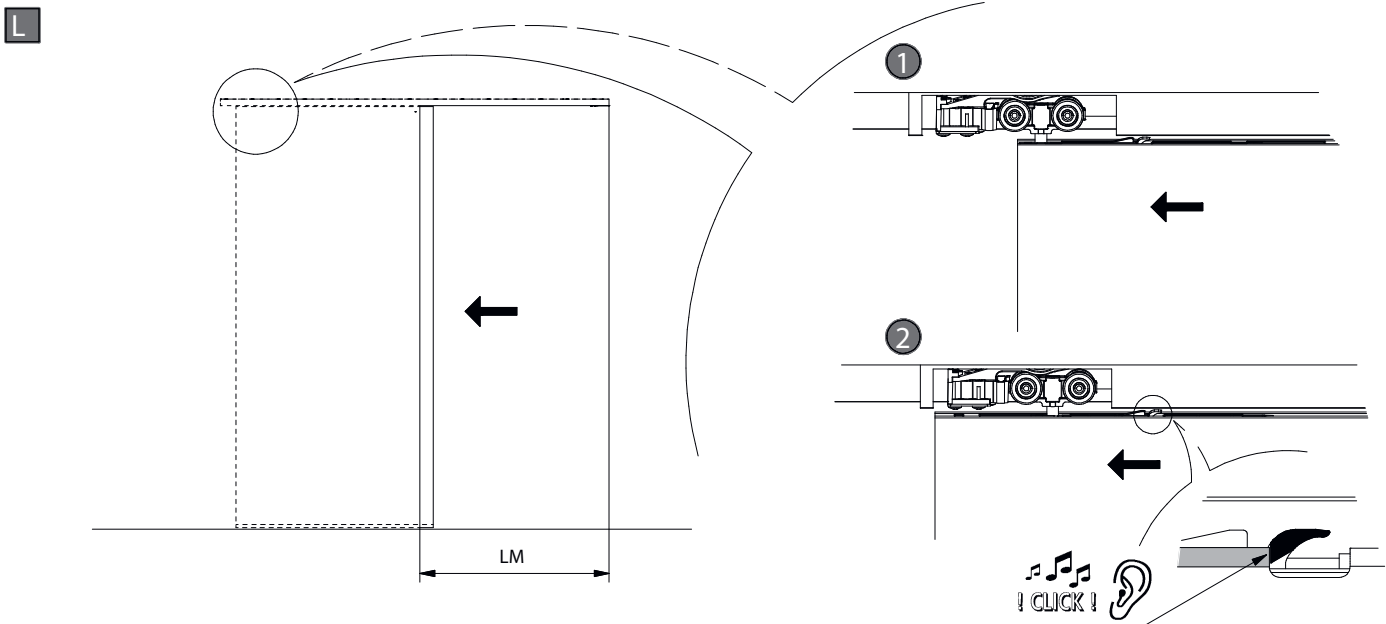


- 3 Schienenreiniger
 Trail cleaner
 Środek do czyszczenia
 Art. No. 057.3099.071

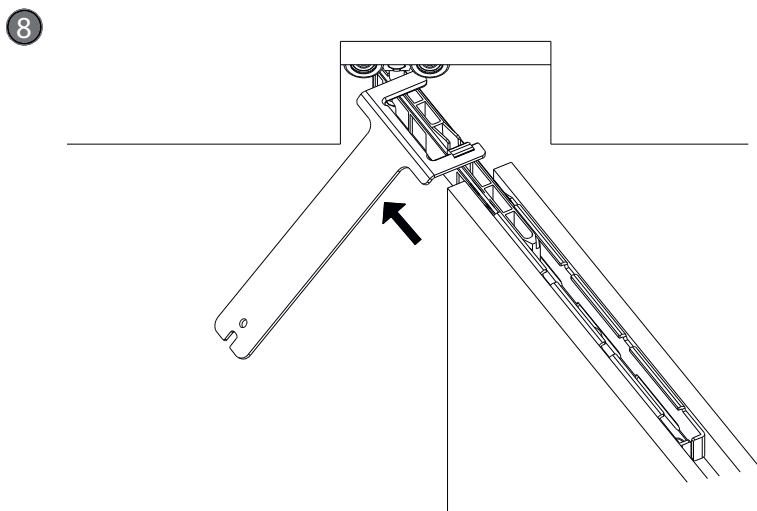
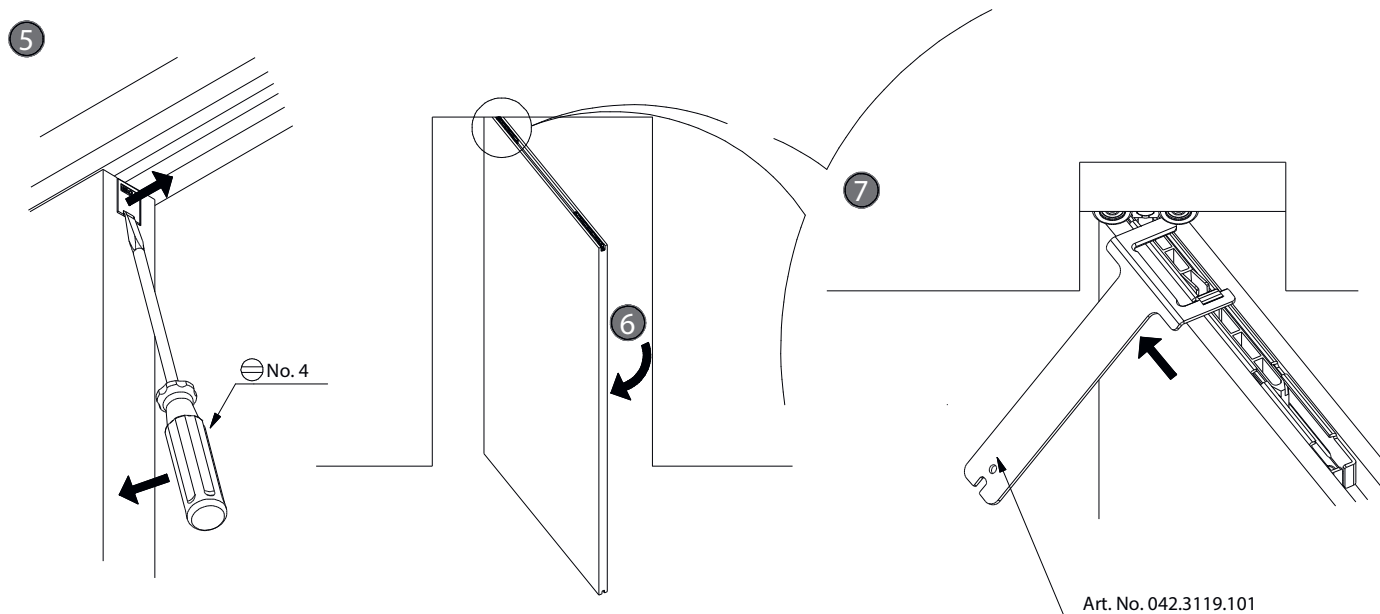
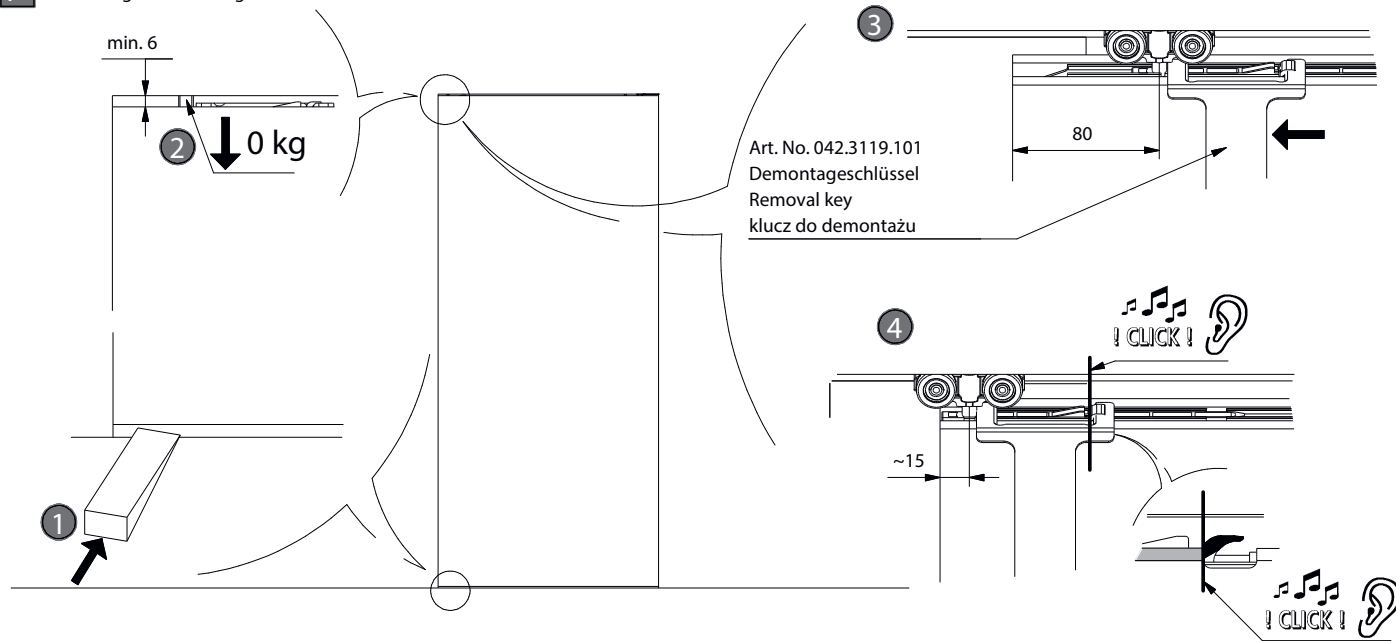




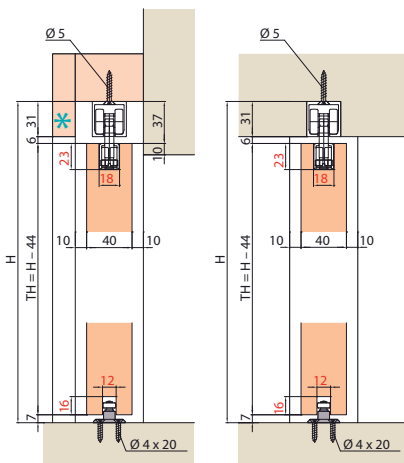
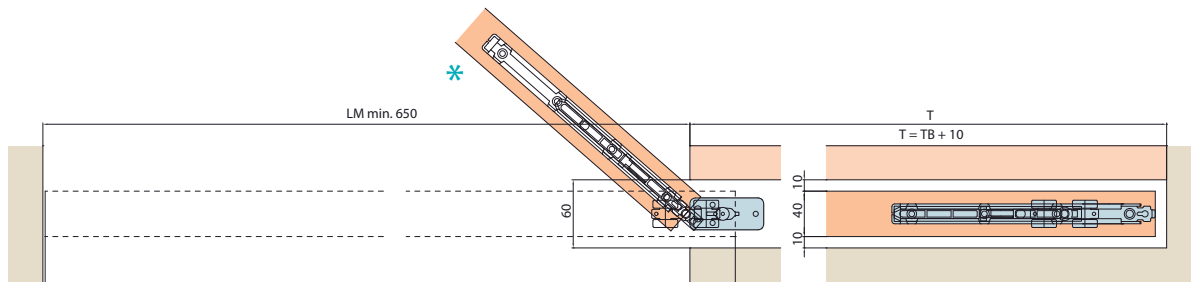
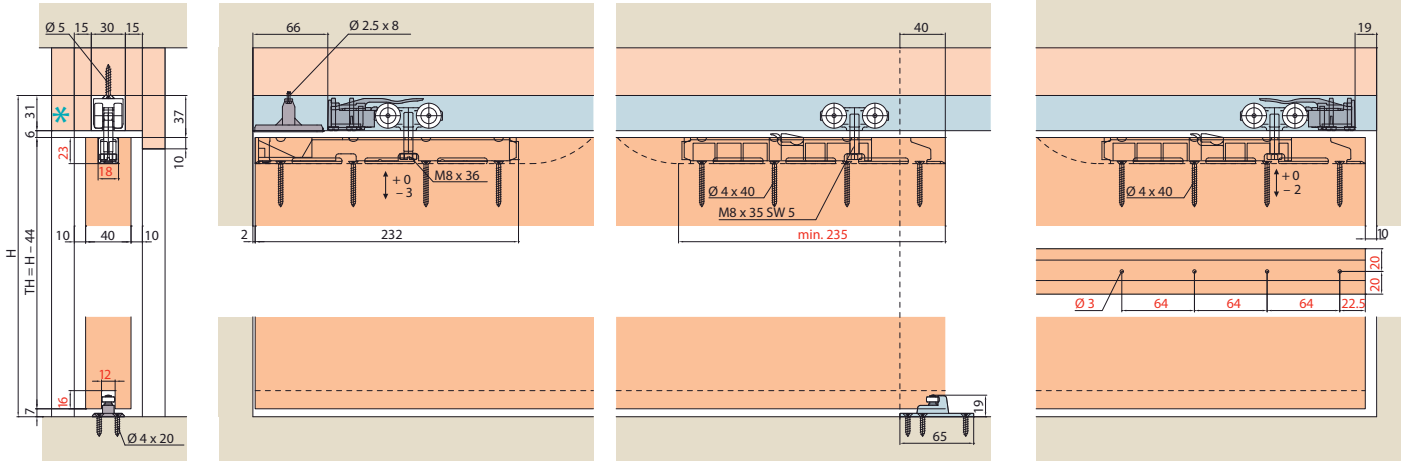




P Demontage / D montage / Demonta



Einbaubeispiele / Mounting examples / Przykład montażu



- * Für das Ein- und Ausschwenken darf eine Blende bis max. an die Unterkante der Schiene reichen.
 At least one of the panels must end at the lower edge of the running track in order to be able to swivel the door inwards and outwards.
 Przynajmniej jeden z paneli musi kończyć się na dolnej krawędzi toru jezdniego, aby umożliwić obrót drzwi do wewnątrz i na zewnątrz.